

ALL IS CALM

For an active family of four – plus two dogs – this newly renovated home in Sydney's Pittwater is an idyllic weekend for all-weather getaways.

STORY *Stephanie Hope* | STYLING *Bone Made* | PHOTOGRAPHY *Simon Whitbread*

LIVING/DINING The reconfigured layout of this home on Sydney's Northern Beaches now allows for a spacious living, dining and kitchen space, which opens to a covered deck and those water views. Dining table and chairs, white sofa and green armchairs, all MCM House. Pfaf two-light pendant, Bloomingdales Lighting. Vase on dining table, Haven and Sarah. Artwork by Martine Emdur from Twenty Twenty Six Gallery. Rug, Armadillo. Coffee table and side table, Totem Road. Table lamp, Anthropologie. Curtains, Divine Designs.

Nestled high on a hill among the trees, overlooking Sydney's majestic Pittwater, this four-bedroom beach cottage serves as the perfect weekender for Anthea and her husband, their sons Henry, 14, and Cameron, 12, and two Oodles named Summer and Thatcher. "It's our special place where we can all enjoy the amazing outdoor life and activities that the area offers," says Anthea. "It really is a place for family and friends to come together."

The couple purchased the home in 2018, impressed by its location, land size, privacy and the view. "The layout was actually not too bad, with everything 'nearly' in the right place," Anthea recalls. "The challenge was finding a way to increase the floor space to expand the kitchen and create a dreamy living and entertaining space."

Architect Matt Power of sketchArc zeroed in on the existing T-shaped deck, which ran along the rear of the house and between a narrow open-plan kitchen, living and dining space and two bedrooms. The centralised base of the 'T' was seldom used, so he incorporated it as internal living space, seamlessly bringing the two sides of the home together. Internal walls throughout were then shifted around slightly to redefine room dimensions and enhance the home's flow and functionality.

With the layout resolved, the dark and dated interiors now needed to be addressed, and interior designers and sisters-in-law Leah and Fliss Pitman of Bone Made were certainly up to the task. "Anthea wanted to retain the home's weatherboard character to reflect its beautiful coastal surroundings, while still ensuring the space felt sophisticated, elegant and homely," says Leah.

In answer, she and Fliss presented a schedule of fixtures and finishes that took "a slightly playful" approach. A bold chequerboard floor sets the tone at the home's front

entrance, followed by warm engineered-oak flooring in the main living spaces and sisal carpet in the bedrooms. For the kitchen, an olive green island adds a pop of colour, while Carrara marble in the benchtops and splashback ticks the box for sophistication and light oak open shelving nails the 'homely' brief.

"The colour palette is light, airy and neutral, with some elements of subdued colour and darker tones to inject contrast, depth and boldness," explains Fliss. "We wanted the home to have its own distinct look and feel, and not just feel like 'another coastal weatherboard cottage.'"

Accommodating the couple's request for a beautiful focal point in the living space, Fliss and Leah incorporated an Escea gas fireplace surrounded by Carrara marble. Shelves display books and vases, and on the opposite wall, a bar area is concealed behind a cavity sliding door. V-groove panels make a feature of the living ceiling and raked ceiling in the adjoining dining space, with skylights added to ensure the space is filled with natural light.

"We love sitting here, particularly on a cold, rainy day," says Anthea of the living space. "The skylights allow us to see the rain falling and the trees and sky above, all while staying cosy by the fire."

Her dreams for an entertainer's kitchen have been realised thanks to the generous island bench, which holds an integrated dishwasher, bin and fridge drawer. A deep butler's sink and ogee-profile benchtops give a nod to classic design, while a wall of full-height cupboards opposite the island encompass pantry storage, an integrated fridge/freezer, linen cupboard and European laundry.

"It's such a dream area to be in when we're entertaining and also when it's just us," says Anthea. "You can sit at the island bench and see the water and trees outside. And the double function of the laundry and butler's pantry is so handy - it's a double kitchen when entertaining and a fully functioning laundry on an everyday basis." ▶

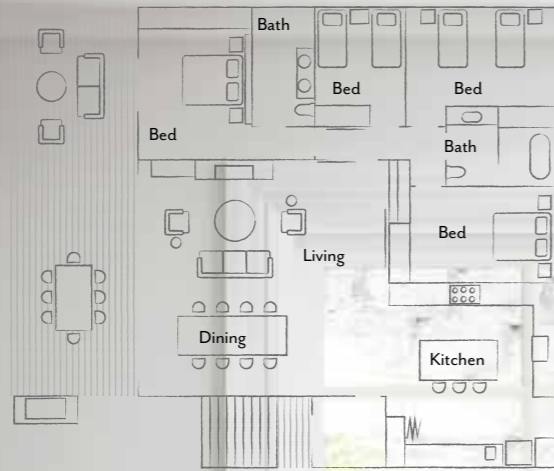
"It's our special place where we can all enjoy the amazing outdoor life and activities the area offers."

ANTHEA, OWNER

DECK *Opposite top* The elevated grey box-timber deck received a new white frame and balustrades, with one half covered by a UV-tinted glass pergola. Outdoor lounges, Coco Republic. **LIVING** *Opposite bottom left and bottom right* On one side of the living space, an Escea gas fireplace from Stoke Fireplace Studio surrounded by Carrara marble makes for a stunning focal point. On the other side, a bar area with the same marble splashback and Vintec wine fridge is concealed behind a barn door. Velux skylights flood the space with light. Round stool, GlobeWest. Samsung 'The Frame' TV, Harvey Norman. Capri wall sconces, Urban Lighting. Items on shelves from McMullin & Co and Papaya.



THE LAYOUT



KITCHEN The family's double-duty kitchen has ample room for food prep plus a wall of storage including a concealed European laundry. Carrara stone benchtops and splashback, Avant Stone. Kitchen cabinetry in Dulux White Exchange, wall of joinery in Polytec Gossamer White laminate and island joinery in Dulux Marble Garden, all by joiner Delta Designs. Winslow butler's sink and Manhattan kitchen mixer in Weathered Brass Organic, Brodware. Zip HydroTap, Fisher & Paykel integrated fridge and fridge drawer, Miele integrated dishwasher, Smeg 'Portofino' freestanding oven and Qasair under cupboard rangehood, Winning Appliances. Contemporary Scandinavian metal pendants, Lighting Collective. Bar stools, Coco Republic. Engineered timber flooring in Aged Smoked & Limed, Royal Oak Floors. ▶



“The kitchen is such a dream area to be in when we’re entertaining.”

ANTHEA, HOMEOWNER



Continuing the elegant palette in the couple's ensuite, Moroccan Zellige tiles, limestone pavers and microcement walls make for a cocooning, tactile space. "We added some luxe aged brass accents, round above-counter basins and reeded glass shower screens," says Leah. "The ensuite has such a tranquil feel about it - it's the perfect mix of coastal and refined."

"Leah and Fliss were amazing to have on board, and they really pushed my boundaries," says Anthea. "Their microcement bathrooms and ogee-edge suggestion for the kitchen benchtops and fireplace were things that were totally not on my radar and I love them! They really listened and managed to pull together what I loved and made it all work together."

Anthea is particularly enamoured with the neutral colour scheme, which aligns perfectly with the coastal cottage feel while lending a light, subdued quality to the interior. "The house has the calmest feeling," she says. "The greens, blues and natural tones are beautifully complemented by the landscaping, and really bring the outside in. I find the white walls allow the stunning green kitchen island and the marble throughout the house to be the feature."

Since the completion of the home, Anthea and her family have spent many happy weekends soaking up its charms. And with an exciting overseas job opportunity now on the cards, they will be renting it out for another family to enjoy - lucky them!

Bone Made, Brookvale, NSW; bonemade.com.au or @_bonemade. SketchArc, Manly, NSW; sketcharc.com.au. Keith Root Building Services, Avalon Beach, NSW; keithrootbuilding.com.au. Greenstone Home & Gardens; greenstonehomeandgardens.com.au

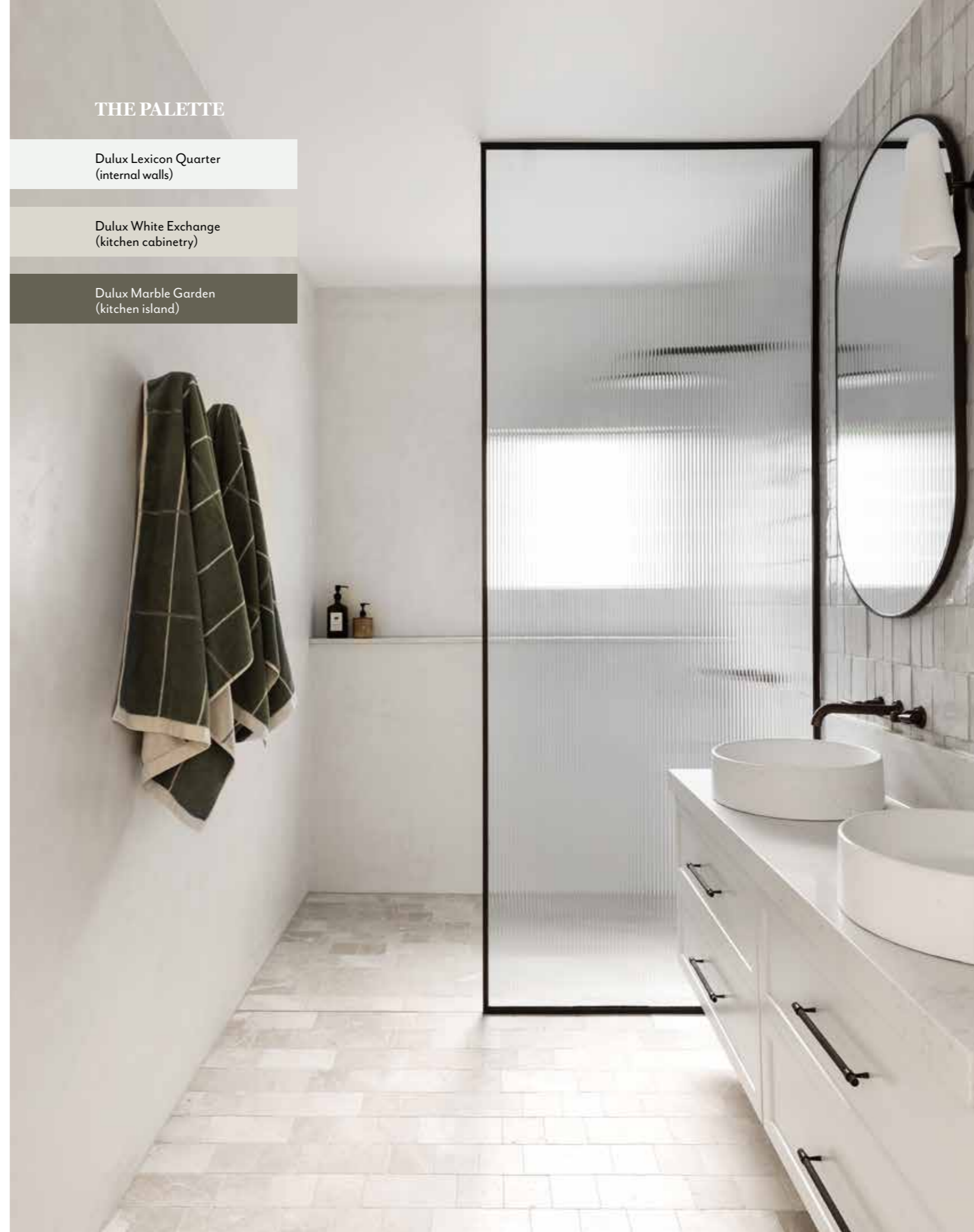
MAIN BEDROOM Bedhead upholstered in The Textile Company 'Sorrento' fabric in Pebble, Beds Ahead. Side table, Totem Road. KiKi plaster wall sconce, LuMu Interiors. **ENSUITE** Mercadier microcement walls in a Sugar matt finish, Mineral Fox. Bejmat wall tiles in Snow, Tiles of Ezra. Crema Cobble tumbled limestone floor tiles, Josie Co. Halo basins in Snow White, Concrete Nation. Manhattan tapware and shower set in Weathered Brass Organic, Brodware. Bianco single sconce, Jimmy Raiden. Custom aged bronze-framed mirrors and reeded glass shower screen by glazier.

THE PALETTE

Dulux Lexicon Quarter
(internal walls)

Dulux White Exchange
(kitchen cabinetry)

Dulux Marble Garden
(kitchen island)

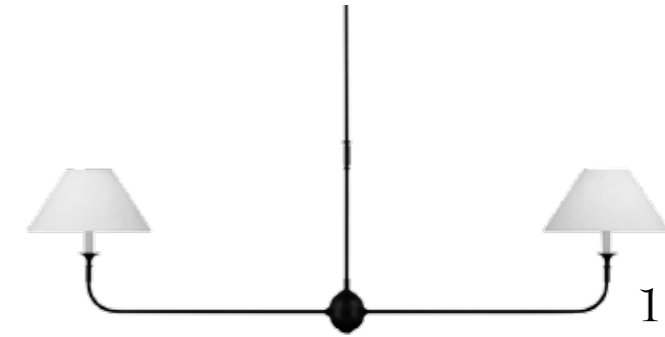


Paint colours are reproduced as accurately as printing processes allow.

THIS IS THE LIFE

Relaxing alfresco is easily done with not one but two undercover areas to choose from. "One has a vaulted ceiling and fan, and the other has a pergola roof with UV tinted glass to protect us from the sun," says Anthea. "It's a stunning place to sit at the end of the day and watch the sunset over the water and the birds return to their trees for the night."

EXTERIOR Faced with a steep and narrow driveway and an overgrown garden, the couple asked Dan Grant at Greenstone Home & Gardens to work his magic. They can now admire the terraced sandstone oasis from their deck or the hanging chair.



THE SOURCE

A dreamy, welcoming home can be yours with these creature comforts that speak of understated luxury.



Produced by Anna Campbell.

1 Thomas O'Brien 'Piaf' linear pendant light in Aged Iron, \$1199, The Montauk Lighting Co. 2 Pompeii rug in Ricotta, from \$1440, Armadillo. 3 Menu Torso 37 table lamp, \$555, Beon. 4 Linen double-size duvet cover set in Cinnamon, \$270, Cultiver. 5 Shiloh oval wall mirror, \$100, Freedom. 6 Mizu Drift Mk2 pull out gooseneck sink mixer in Brushed Gold, \$620, Reece. 7 La Rose scented candle, \$69, Maison Balzac. 8 Georgia queen-size bed in Cream, \$1299, Life Interiors. 9 Mayonella 600mm stone-look benchtop, from \$201/m, Kaboodle Kitchen. 10 Lola round basin in Matt White, \$350, ABI Interiors. For Where to Buy, see page 192. H&G